

THERMOCODE SERIES 2

HIGH SPEED IN-LINE CONTINUOUS & INTERMITTENT
MOTION THERMAL TRANSFER OVERPRINTER RANGE



FEATURES

- ▶ Ultra high speed operation
- ▶ 305 dpi (12 dots/mm) resolution
- ▶ Self levelling printhead
- ▶ All electronic operation
- ▶ Easy loading ribbon magazines
- ▶ Wide range of print areas
- ▶ Large capacity 3.5mb memory
- ▶ Enhanced modular construction
- ▶ Onboard diagnostics
- ▶ Minimal format generation time
- ▶ Printer status display
- ▶ Multi-level password protected access
- ▶ Multi-language facility
- ▶ High speed image updating
- ▶ Real time printing facility
- ▶ Quality engineered product
- ▶ Electronically adjustable print position
- ▶ Full networking capability
- ▶ User friendly

Provides an ideal solution to virtually all on-line Thermal Transfer printing applications. Compatible with most continuous and intermittent motion packaging and labelling machinery.



World Class Coding & Marking Systems



*getting you
up to speed*

THERMOCODE SERIES 2



Thermocode Series 2 provides the ideal solution for in-line coding onto most flexible packaging materials. The range of printers can be operated locally from the user friendly control module, directly from a PC or via the Open Date Networking facility.

To offer maximum flexibility each printer is supplied as standard with a copy of our Windows based format design software package.

STANDARD PRINT FORMATS – FEATURES

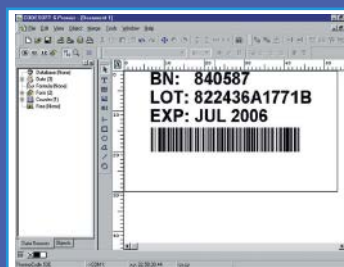
- ▶ Batch codes
- ▶ Lot numbers
- ▶ Expiry dates
- ▶ Use by dates
- ▶ Price marking
- ▶ Real time coding
- ▶ Date offsets
- ▶ Bar codes
- ▶ Graphic images
- ▶ Logos
- ▶ Incremental numbering
- ▶ Shift codes
- ▶ Offset shift codes
- ▶ Mirror imaging
- ▶ Julian date codes (EU & US)
- ▶ Day codes
- ▶ Week numbers
- ▶ Customised automatic dates
- ▶ Automatic shift code update
- ▶ Individual rotation in 90 degree steps
- ▶ Dual image memory
- ▶ Lines and boxes
- ▶ Circles, polygons and oblique lines

EXAMPLES



The standard formats can be easily modified to suit your particular requirements. After modification of a format, the control module offers a "save as" facility in order that data can be accurately stored as required. (Refer to Thermocode Series 2 operating manual for full details of standard print formats).

... OR CREATE YOUR OWN



The Windows based WYSIWYG software design programme allows the user to create formats in house adding complete flexibility to the in-line coding system. Product format generation including special fonts and/or graphics can be completed in a matter of minutes.

THERMOCODE SERIES 2



CONTROL MODULE

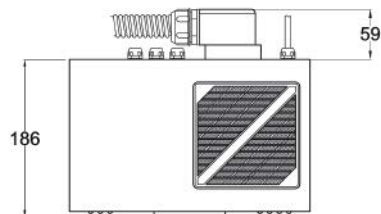
- ▶ Simple format selection from printer memory
- ▶ 4 line 20 character, back lit LCD display
- ▶ Format editing with 'save as' facility
- ▶ On board language selection
- ▶ Foreign character insertion facility
- ▶ Multi level access password protection (optional)
- ▶ On board diagnostics including:
 1. Low and end of ribbon alarm
 2. Magazine 'out' warning
 3. Printer status
 4. Print count
 5. Print head data analysis



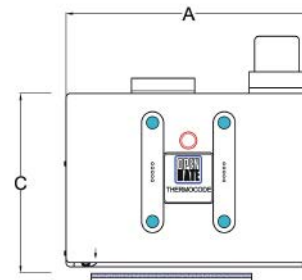
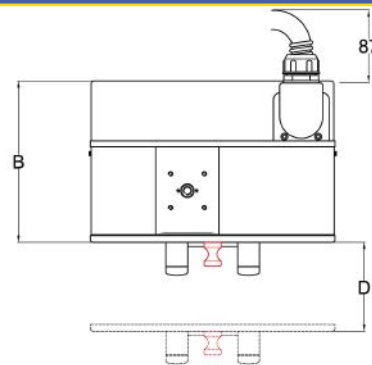
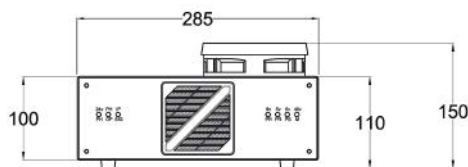
TIP UP FRAME FACILITY

- ▶ Aids trouble free printhead cleaning
- ▶ Ensures simple web threading through printer frame
- ▶ Gives access to clean print base rubber
- ▶ Easy replacement of print base rubber

INSTALLATION DETAILS



POWER SUPPLY UNIT



| | 53S | 53M | 53L | 107S | 107M | 107L | 53C | 107C |
|--------------------------------|-------|-------|-------|-------|-------|-------|---------|---------|
| A - Printer Width | 180mm | 230mm | 290mm | 180mm | 230mm | 290mm | 180mm | 180mm |
| B - Printer Depth | 190mm | 190mm | 190mm | 250mm | 250mm | 250mm | 190mm | 250mm |
| C - Printer Height (installed) | 231mm | 231mm | 231mm | 231mm | 231mm | 231mm | 239.5mm | 239.5mm |
| D - Magazine Removal | 120mm | 120mm | 120mm | 170mm | 170mm | 170mm | 120mm | 170mm |

THERMOCODE SERIES 2



COMMUNICATIONS

- ▶ Direct from control module – standard
- ▶ RS232 (Serial Port) PC compatible
- ▶ TCP/IP (optional)
- ▶ USB (optional)

FONT STYLES AND SIZES

Each printer is supplied with standard true type and bitmap fonts which will cover the majority of applications from start up. Alternatively, any Windows true type or bitmap font along with graphic images can be downloaded to meet specific customer requirements.

Text sizes are between 1mm and 40mm high.

BAR CODE STYLES (PRINTER GENERATED)

EAN8, EAN13, EAN128, UPC-A, UPC-E, CODE 39, CODE 128, ITF Codes, Extended Code 39, Codabar, MSI, Code 93, UCC-128, HIBC, UPC-E (6, System 0), UPC-E (6, System 1). Many other barcode styles are supported by our Windows design software package e.g. Datamatrix, 2/5 Industrial, Plessey etc.

CONSUMABLES

Open Date thermal transfer ribbon is available in a wide range of sizes, colours and grades to suit the entire range of Thermocode printers plus most other makes and models. Extended warranty terms apply when Open Date ribbon is used in conjunction with Thermocode printers.



SPECIFICATIONS

| Printer Type | Intermittent | | | | | | Continuous | |
|-------------------------------|----------------------------------|---------|--------|---------------------|---------|---------|---------------------|---------|
| | 53S | 53M | 53L | 107S | 107M | 107L | 53C | 107C |
| Printer Model | 53S | 53M | 53L | 107S | 107M | 107L | 53C | 107C |
| Print Width - Max. | 53.3mm | 53.3mm | 53.3mm | 106.6mm | 106.6mm | 106.6mm | 53.3mm | 106.6mm |
| Print Length (sweep) | 53.3mm | 106.6mm | 160mm | 53.3mm | 106.6mm | 160mm | 500mm | 250mm |
| Ribbon Width | 55mm | 55mm | 55mm | 110mm | 110mm | 110mm | 55mm | 110mm |
| Ribbon Length - Max. | 350m | 500m | 500m | 350m | 500m | 500m | 500m | 500m |
| Printer Weight | 7kg | 8kg | 9kg | 8kg | 9kg | 10kg | 6.5kg | 7.5kg |
| Cycles per minute - Max. | 500 cycles per min. | | | 450 cycles per min. | | | 500 cycles per min. | |
| Print speed per second - Max. | 400mm | | | | | | 600mm | |
| Printhead Resolution | 305 dpi (12 dots per millimetre) | | | | | | | |
| Memory Capacity | 3.5mb | | | | | | | |
| Supply Voltage | 115/230 Volts AC | | | | | | | |
| Power Supply Weight | 6kg | | | | | | | |
| Serial Baud Rate | 230,400 (max) | | | | | | | |

PPMA



Open Date Equipment Ltd.
Units 8 & 9 Puma Trade Park
145 Morden Road
Mitcham, Surrey, CR4 4DG.
UNITED KINGDOM
Tel: +44 (0)20 8655 4999
Fax: +44 (0)20 8655 4990
Email: sales@opendate.co.uk
Web site: www.opendate.co.uk

Open Date Systems, Inc.
Springfield Road, PO Box 538
Georges Mills, NH 03751
U.S.A.
Tel: +(1) 603 763 3444
Fax: +(1) 603 763 4222
Toll free: 877-OPENDATE
Email: info@opendate.com
Web site: www.opendate.com

Open Date France
Z.I. D'Attichy
60350 Attichy
France
Tel: +33 (0) 344 42 94 43
Fax: +33 (0) 344 42 17 17
Email: info@opendatefrance.com
Web site: www.opendatefrance.com

Open Date GmbH
Mittlere Stämmig 4
97297 Üttingen
Germany
Tel: +49 (0) 9369 98 24 0
Fax: +49 (0) 9369 98 24 24
Email: info@opendate.de
Web Site: www.opendate.de